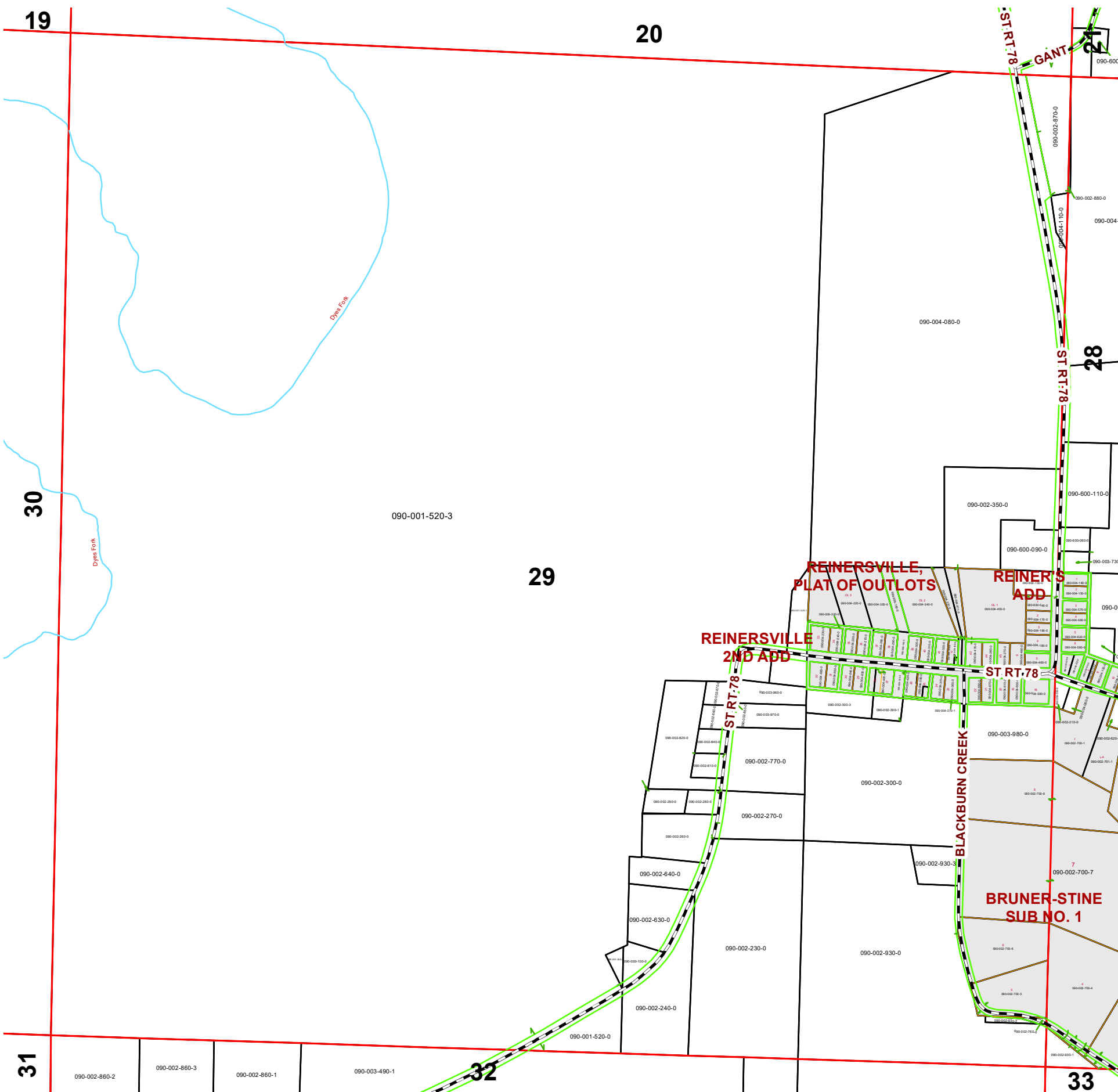
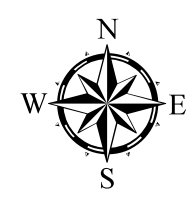


# MANCHESTER TOWNSHIP SECTION 29 R 10 TWP 7 MORGAN COUNTY, OHIO



PIN	Owner	LegalDescr	Acres	VOL	PAGE	Survey_Ref
090-002-660-0	BAR B INVESTMENT GROUP LLC	R10 T07 S29 SD 29	0.5	OR235	4268	NoSurvey.pdf
090-002-670-0	BAR B INVESTMENT GROUP LLC	R10 T07 S29 SD 28	0.5	OR235	4268	NoSurvey.pdf
090-002-300-0	BASHFORD SARAH H	R10 T07 S29 SD 55	13.78	OR5	492	MAN-0039.pdf
090-002-870-0	BLACK THOMAS E	R10 T07 S29 SD 67	2.411	OR128	600	MAN-0015.pdf
090-002-930-0	CAIN STEVEN E & ANITA D	R10 T07 S29 SD 14	25.962	OR25	142	MAN-0040.pdf
090-002-930-3	CAIN TOBY	R10 T07 S29 SD 75	1.178	OR225	521	MAN-0086.pdf
090-000-100-0	CAMPBELL KENNETH E	R10 T07 S29 SD 48	0.57	OR199	443	NoSurvey.pdf
090-001-520-2	CAMPBELL KENNETH E	R10 T07 S29 SD77	0.37	OR234	1866	MAN-0110.pdf
090-001-520-1	CLARK LARRY L & LINDA D	R10 T07 S29 SD76	0.97	OR234	1871	MAN-0109.pdf
090-002-300-1	CLARK TISHA B	R10 T07 S29 SD 71	0.458	OR181	79	MAN-0030.pdf
090-002-300-3	CLARK TISHA B	R10 T07 S29 SD 73	1.036	OR181	79	MAN-0034.pdf
090-004-090-0	GOSLIN LINDA L & JAMES R	R10 T07 S29 SD 19 S	0.759	OR191	314	MAN-0072.pdf
090-002-240-0	HAINES RANDALL	R10 T07 S29 SD 57	4.5	OR216	2917	NoSurvey.pdf
090-002-280-0	HAINES RANDALL	R10 T07 S29 SD 30	0.55	OR137	709	MAN-0036.pdf
090-002-810-0	HAINES RANDALL	R10 T07 S29 SD 35	0.5	OR137	709	MAN-0026.pdf
090-002-630-0	HAINES RANDALL	R10 T07 S29 SD 21	2.21	OR137	709	NoSurvey.pdf
090-002-640-0	HAINES RANDALL	R10 T07 S29 SD 25	1.29	OR137	709	NoSurvey.pdf
090-002-260-0	HAINES RANDALL	R10 T07 S29 SD 36-37	2.12	OR137	709	MAN-0036.pdf
090-002-290-0	HAINES RANDALL	R10 T07 S29 SD 31	0.7	OR137	709	MAN-0036.pdf
090-002-820-0	HAINES RANDALL	R10 T07 S29 SD 32-34	3.359	OR137	709	MAN-0026.pdf
090-002-230-0	HARLOW DONALD L	R10 T07 S29 SD 10	15.06	OR217	3365	NoSurvey.pdf
090-002-270-0	HARLOW DONALD L	R10 T07 S29 SD 56	2.62	OR53	653	MAN-0050.pdf
090-003-830-0	KEENER GREG	R10 T07 S29 SD 40-44	0.74	OR137	733	NoSurvey.pdf
090-003-980-0	MILLER TINA J	R10 T07 S29 SD 54	3.237	OR230	3116	Bruner-Stine S
090-001-520-3	OHIO DEPT OF NATURAL RESOURCES	R10 T7 S29 SD4	447.71	OR235	1024	MAN-0115-B.p
090-001-520-0	OHIO FRANKLIN REALTY LLC	R10 T07 S29 SD 2	2.28	OR233	5110	MAN-0115-B.p
090-004-080-0	OLIVER KENNETH & LISA	R10 T07 S29 SD 1	68.728	OR235	4520	MAN-0117.pdf
090-002-770-0	SHUSTER JOHN DAVID & TRISTA LYN	R10 T07 S29 SD 18	3.463	OR235	849	MAN-0055.pdf
090-002-840-0	SHUSTER TIMOTHY BLAINE ET4AL	R10 T07 S29 SD27	0.495	OR231	4540	MAN-0027.pdf
090-003-970-0	SHUSTER TIMOTHY BLAINE ET4AL	R10 T07 S29 SD 63	1.39	OR231	4540	NoSurvey.pdf
090-002-850-0	SHUSTER TIMOTHY BLAINE ET4AL	R10 T70 S29 SD 58 HI	0.04	OR231	4540	NoSurvey.pdf
090-002-350-0	TACKETT ROBERT R TRUSTEE	R10 T07 S29 SD 15	5.955	OR204	3023	MAN-0043A.pd
090-600-090-0	TWP TRUSTEES (PT CEMETERY)	R10 T07 S29 LOT 59-6	0			NoSurvey.pdf
090-600-130-0	U S GOVERNMENT	LAND BETWEEN LOTS	0			NoSurvey.pdf
090-003-960-0	VAUGHAN JAMISON & TISHA	R10 T07 S29 SD 24 S	0.959	OR226	3146	MAN-0083.pdf
090-004-110-0	WILSON DUSTIN C & SHANNON C	R10 T07 S29 SD 66	0.4	OR128	600	NoSurvey.pdf



Boundaries			
	Hydro		Section
	Roads		Lot
	County		Township
	Parcel		ROW



Disclaimer: The information that these maps contains is for reference purposes only. Please bring any erros to the attention of the Engineer's Office staff. Thank you

Source: Morgan County Engineer's Office  
 Author: Marcia Wolfe  
 Date: 12/31/20

